



Collectively Reducing
Health Disparities and
Improving Community Health

VALUE REPORT 2024

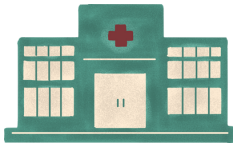
Multisector Regional Collaboratives



LA Partnership

The LA Partnership consists of more than **30** nonprofit hospitals, health systems, public health departments, and community partners in Los Angeles County working collaboratively with a focus on **street medicine**, **recuperative care**, and **community health navigator programs**.

The **2024 Charter** was signed by 7 nonprofit hospitals and health systems, with 5 new nonprofit hospitals participating in the October year end convening.



The LA Partnership report, [Focus on Homelessness in Los Angeles County](#) and recommendations was released on May 21 at the HASC Annual Meeting. A panel presented *Innovating Health Care Access for the Unhoused* sharing about successful interventions collaborations with hospitals, public health agencies, and community partners.

CLC connected LA Partnership members to the California Community Foundation, which awarded **USC Street Medicine** a **planning grant** that will launch in early 2025.

2024 Collaborative Convenings

February 22 - Street Medicine Program Models

 16 participants

April 18 - CalAIM Reimbursements

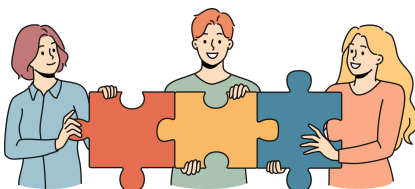
 35 participants

June 27 - Local Health Department Supports

 22 participants

October 3 - LA County Medi-Cal Managed Care Plans and CalAIM for field services

 28 participants



Ventura County Community Health Improvement Collaborative (VCCHIC)

CLC convenes and serves as the backbone for VCCHIC, a formal, charter-bound partnership of health agencies that collaborate on the regional **Community Health Needs Assessment (CHNA)** and implementation strategy. CLC holds the contract with Conduent to conduct the 2025 needs assessment and implementation strategy. Through the **California Accountable Communities for Health Initiative (CACHI)**, Ventura County elevates community voices, strengthens cross-sector partnerships, enhances equity in governance and leadership, and advances access to equitable health care and implementation of CalAIM.


Ten organizations serve on the **Steering Committee** and participate in the CHNA and CHIS process every three years.

- Adventist Health Simi Valley
- Camarillo Health Care District
- Clinicas Del Camino Real
- Community Memorial Health System
- Dignity Health
- Gold Coast Health Plan
- Kaiser Foundation Health Plan
- Ventura County Behavioral Health
- Ventura County Community Health Center
- Ventura County Public Health




2024 Collaborative Convenings


February 15 - Community Information Exchange

 22 participants


May 16 - CalAIM Education for providers

 27 participants

August 14 - Conejo Health Services and CHNA/CHIS

 25 participants

November 21 - Proposition 1

 21 participants



Collectively Reducing Health Disparities and Improving Community Health

VALUE REPORT 2024

Multisector Regional Collaboratives Continued



Inland Empire Behavioral Health Collaborative (IEBHC)

The IEBHC consists of **29 charter participants** and seeks to address challenges and gaps in mental health and behavioral health care within Riverside and San Bernardino Counties. Efforts focus on improving the process of care and reducing times for patients entering acute care hospital emergency departments (ED) before receiving treatment for psychiatric care.


Key Highlights

- **Established Workgroups**
 - Cross-sector case conferencing and resource mapping
 - Unifying the behavioral health crisis response eco-system



2024 Collaborative Convenings


January 31 - Official launch: Emerging Best Practices and Resources Shared

 49 participants

April 24 -IEBHC Charter Adopted; BH Bed Capacity; Prop 1 Update

 37 participants


June 26 - Models of Care; Working with Schools; Housing for Homeless

 50 participants

August 29 - Certified Community Behavioral Health Clinic Models; Cross Sector Case Conferencing; Case Study

 45 participants

November 20 - 2020 - 2022 HQIP Data Report; Funding Opportunities; Workgroup Updates

 20 participants



Hospital Anchor Strategies and Impact Purchasing

The **Regional Hospital Supplier Diversity Initiative** aims to support HASC member hospitals in expanding their purchasing with diverse suppliers (minority, women, LGBTQIA+, and disabled veterans) and fostering relationships between diverse businesses, hospital procurement and supply chain managers, and economic development organizations (EDO).

Building Bridges: Advancing Supplier Diversity in Health Care Conference

Attendees

- **115 Attendees**
 - 29 hospitals and health systems from 13 different hospitals
 - 62 diverse vendors
 - 24 other organizations
- **100%** would attend future networking events
- **79%** made significant connections for their organization

Revenue

- **\$15,408** raised from registration
- **\$2,000** raised from sponsorships



Networking Events Highlights

2 Events: CHLA and Huntington Hospital

- Approximately **160** collective attendees

LA Landscape Analysis Report Highlights

- Published in August
- **25 key informant interviews** conducted including hospital representatives, business owners, EDOs, and content experts



Health Care Inclusive Procurement Network (HCIPN)

Led and populated by HASC hospital and health system membership, the directory identifies contract-ready diverse vendors.

- **13 hospitals and health systems** have shared their vendor lists
- Directory currently hosts **3,000 records**



Collectively Reducing Health Disparities and Improving Community Health

VALUE REPORT


2024

Education and Training




Understanding CalAIM: A Virtual Session for Southern California Hospitals and Health Systems

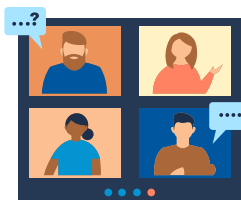
Hospital and health system executives, discharge planners/case managers and community health leaders gathered to learn about the significance of CalAIM, its policies, with a focus on enhanced care management (ECM), and considerations for financial stability.

 November 19 - **117 Attendees**

Diversity, Health Equity and Inclusion Roundtables

- Perinatal mental health in the hospital setting
- Promoting birth equity at the hospital and in the community: Successes and Strategies at MemorialCare Miller Children's and Women's Hospital Long Beach
- Organizational Birth Equity Assessment enhancement and pilot opportunity with DoTank
- Implementing Your DE&I Initiatives: Cross-Industry Best Practices with Walmart, Teamforce AI, Boston Scientific and UKG Workforce Institute

 **92** Collective attendees



Organizational Birth Equity Assessment (OBEA)

CLC is refining the OBEA and met with multiple stakeholders including potential funders, hospitals, health systems, national and state hospital associations and Medi-Cal managed care plans to present and receive feedback on Phase II of the OBEA.

Podcasts

- MLK Community Healthcare's Cultural Diversity Initiative
- Collaborating to Improve Health for All in Ventura County
- Supplier Diversity: A View from Partnering Businesses



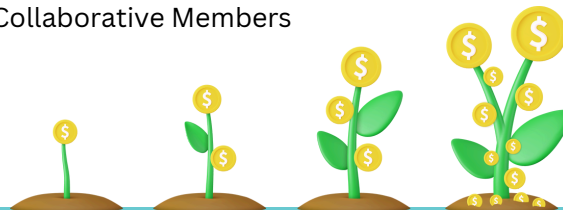
Grants and Sponsorships

From **2018 - 2024**, CLC has raised over **\$7.5M in grants**, sponsorships, and support from AllHealth and HASC member hospitals to support initiatives and projects.

In **2024**, CLC received over **\$1.17M** in funding support.

CLC is grateful to its funders:

- Adventist Health White Memorial
- AllHealth
- California Accountable Community for Health Initiative
- Cedars-Sinai Community Benefit Program
- CommonSpirit Health
- Inland Empire Health Plan
- Loma Linda University Health
- Molina Healthcare
- Kaiser Permanente Southern California
- San Antonio Regional Hospital
- The California Endowment
- Ventura County Community Health Improvement Collaborative Members



Donate Here!



Communities Lifting Communities (CLC) is a 501(c)(3) nonprofit (EIN # 85-3745993) affiliate organization of the Hospital Association of Southern California (HASC). CLC works to advance systems change and promote intercultural health equity through the effective use of data, prevention strategies, leadership and partnerships. Working in partnership with local communities, we facilitate the transformation of the health care system to reduce health inequities and improve community health. Visit our newly redesigned website to learn more!
communities.hasc.org



COMMUNITIES
LIFTING
COMMUNITIES